

FEATURES

- Flanged design
- Internal diaphragm design

APPLICATION

- Diaphragm seal to combine with pressure gauges or transmitters, Suitable for corrosive, contaminated or hot pressure media.

Back side diaphragm

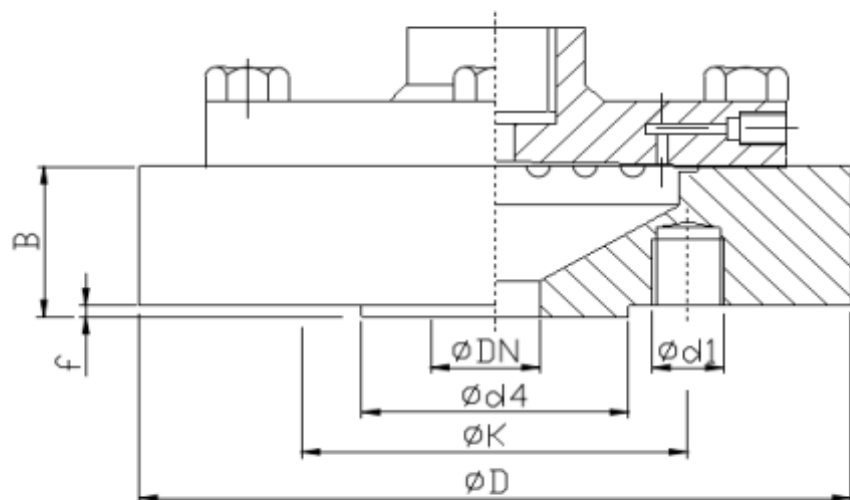


STANDARD SPECIFICATIONS

Range type	: -1/0 to 250 bar
Top chamber material	: AISI 304 SS
Diaphragm	: AISI 316L welded on upper part
Gaskets	: PTFE - Metal for high pressure
Bottom chamber material	: AISI 316 SS - AISI 316L SS
Instrument connection	: 1/2" NPT (F) / 1/2" BSP (F) / Capillary line
Sealing fluid	: Silicon DC 200 (-40...205°C)
Process connection	: Flanged
Assembly	: Direct or remote
Pressure rating	: Class 150 to 2500 PN 10 to 250

DIMENSIONAL DRAWING

DIMENSIONAL DRAWING



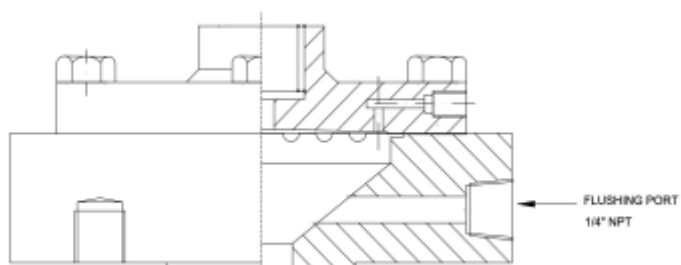
All dimensions are in mm.

ASME standard - Dimensions in mm							
FLANGE SIZE	Ø d1	B	f	ØDN	Ød4	Øk	ØD
1/2" 150	1/2"-13 UNC	35	1,6	15	34,9	69,9	100
1/2" 300	1/2"-13 UNC	38	1,6	15	34,9	82,5	100
1/2" 600	1/2"-13 UNC	48,5	6,35	15	34,9	82,5	100
3/4" 150	1/2"-13 UNC	43	1,6	20	42,9	60,5	100
3/4" 300	5/8"-11 UNC	43	1,6	20	42,9	66,5	117,5
3/4" 600	5/8"-11 UNC	43	6,35	20	42,9	66,5	117,5
1" 150	1/2"-13 UNC	38	1,6	25	50,8	79,2	108
1" 300	5/8"-11 UNC	38	1,6	25	50,8	88,9	123,9
1" 600	5/8"-11 UNC	48,5	6,35	25	50,8	88,9	123,9
1,5" 150	1/2"-13 UNC	35	1,6	40	73	98,6	127
1,5" 300	3/4"-10 UNC	35	1,6	40	73	114,3	155,4
1,5" 600	3/4"-10 UNC	48,5	6,35	40	73	114,3	155,4
2" 150	5/8"-11 UNC	35	1,6	50	92	120,6	152,4
2" 300	5/8"-11 UNC	35	1,6	50	92	127	165
2" 600	5/8"-11 UNC	48,5	6,35	50	92	127	165

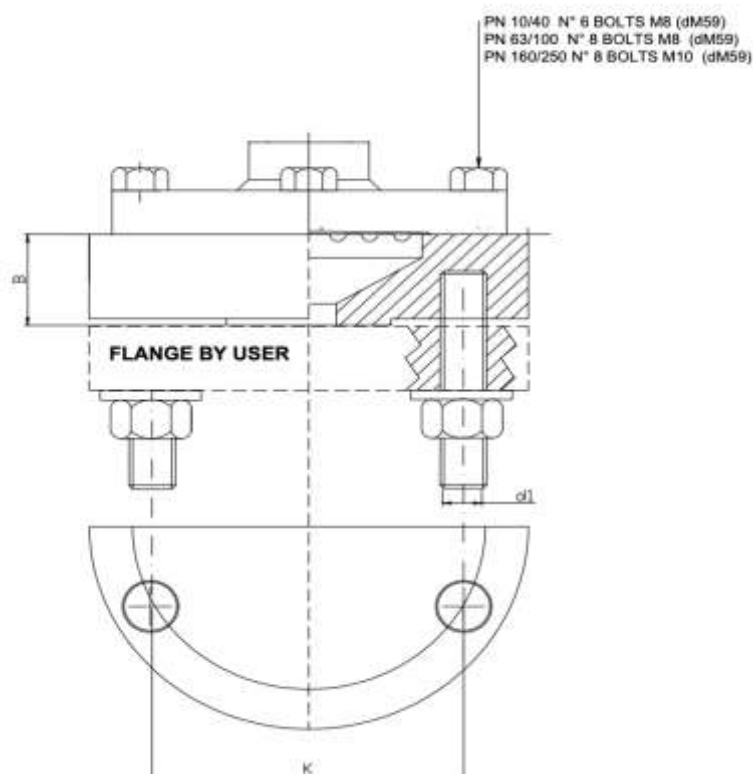
DIN EN 1092 -1 standard - Dimensions in mm							
FLANGE SIZE	Ø d1	B	f	ØDN	Ød4	Øk	ØD
DN 15 PN 10/40	4 x M 12	30	2	15	45	65	100
DN 15 PN20	4 x M 14	30	1,6	15	34,9	60,3	100
DN 25 PN 10/40	4 x M 12	30	2	25	68	85	115
DN 25 PN20	4 x M 14	30	1,6	25	50,8	79,4	108
DN 40 PN 10/40	4 x M 16	30	2	40	88	110	150
DN 40 PN20	4 x M 14	30	1,6	40	73	98,4	127
DN 50 PN 10/40	4 x M 16	30	2	50	102	125	165
DN 50 PN 20	4 x M 16	30	1,6	50	92,1	120,6	152

Other flange size or standard available

EXECUTION WITH FLUSHING PORT BUILT-IN FLANGE



BOLTING INFORMATION



ORDERING CODES

1. RANGE TYPE

D410	Threaded design
D412	Flanged design
D413	Open flange design

2. TOP CHAMBER MATERIAL

LC	AISI 304 SS	LF	AISI 316 SS
LG	AISI 316L SS		

3. DIAPHRAGM MATERIAL

DG	AISI 316L SS	DM	Monel 400
DO	Hastelloy C-276	DQ	Inconel 600
DV	Titanium	DW	Tantalum
D9	Gold Plated	DP	PTFE (Max 10 BAR)

4. GASKETS

RP	PTFE	RM	Metal*
	* Customer to Specify		

5. BOTTOM CHAMBER MATERIAL

NC	AISI 304 SS	NF	AISI 316 SS
NG	AISI 316L SS	NM	Monel 400
NO	Hastelloy C-276	NV	Titanium
N4	Polypropylene	N1	PVC

6. INSTRUMENT CONNECTION

03B	3/8" BSP (F)	04N	1/2" NPT (F)
02B	1/4" BSP (F)	04B	1/2" BSP (F)
02N	1/4" NPT (F)		

7. SEALING FLUID

OA	Silicon DC 200 [-40°C to 200°C]
OF	Food grade oil [-20°C to 140°C]
OI	Syltherm 800 [-40°C to 380°C]
OL	Silicon DC 710 [0°C to 250°C]
OG	HT 270 [25°C to 240°C]

8. PROTECTION ON WETTED PARTS

PA	PTFE lining on bottom chamber
PB	PTFE protection for diaphragm
PC	PTFE coating on diaphragm and wetted parts

9. PROCESS CONNECTION

XXX	Refer Flange Table for the codes
------------	----------------------------------

10. HARDWARE

MC	AISI 304 SS
MF	AISI 316 SS

11. ASSEMBLY

B8	Direct
B9	Remote(capillary)

12. CAPILLARY

OU	AISI 304 SS	OV	AISI 316 SS
-----------	-------------	-----------	-------------

13. ARMOUR

OX	AISI 304 SS	OY	AISI 316 SS
OZ	PVC (Ambient max. 60°C)		

14. REMOTE MOUNTING LENGTH

XXXX	1000 mm up to 6000 mm
-------------	-----------------------

15. OTHER OPTIONS

XZ	Dry seal
HL	Helium leak test
TM	Material test certificate 2.2
TC	Material test certificate 3.1
TN	Tested to NACE Standard
TF	PMI Test
TG	IGC TEST
FP	Flushing connection on bottom chamber available

D412

LC

DG

RP

NF

04N

OA

MC

B8

TC

Ordering example: D212-LC-DG-RP-NF-04N-OA-XXX-MC-B8-TC