

## FEATURES

- Quick connect/disconnect
- Laser welded flush diaphragm
- Tri-clamp connection

## APPLICATION

- Food & beverages industries
- Pharmaceuticals & cosmetics

### Clamp connection diaphragm seal

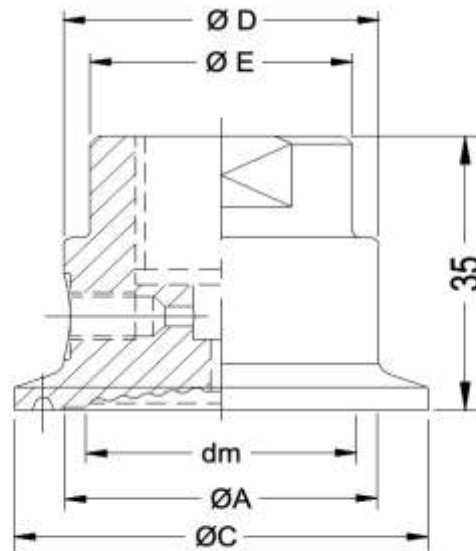


### STANDARD SPECIFICATIONS

|                       |                                       |
|-----------------------|---------------------------------------|
| Range type            | : -1...0 bar to 0...40 bar Tri-Clover |
| Chamber material      | : AISI 316 SS                         |
| Diaphragm             | : AISI 316L SS                        |
| Instrument connection | : 1/2" NPT (F) / 1/2" BSP (F)         |
| Sealing fluid         | : Food Grade oil [-20°C to 140°C]     |
| Process connection    | : 1", 1,5", 2" 2,5", 3"               |
| Assembly              | : Direct                              |

### DIMENSIONAL DRAWING ISO 2852

Type S31



| Size | Dimensions in mm |        |      |     | Range in bar      |
|------|------------------|--------|------|-----|-------------------|
|      | Ø C              | Ø A/dM | Ø D  | Ø E |                   |
| 1"   | 50,5             | 30/22  | 38,5 | 32  | 0...4 to 0...40   |
| 1,5" | 50,5             | 38/32  | 38,5 | 32  | 0...2,5 to 0...40 |
| 2"   | 64               | 48/40  | 51,5 | 32  | 0...1,6 to 0...40 |
| 2,5" | 77,5             | 62/52  | 64   | 32  | 0...1 to 0...40   |
| 3"   | 91               | 72/59  | 76,2 | 32  | 0...1 to 0...40   |

### ORDERING CODES

|                                 |              |            |                                 |                                 |                               |
|---------------------------------|--------------|------------|---------------------------------|---------------------------------|-------------------------------|
| <b>1. Diaphragm seal type</b>   |              | <b>S31</b> | <b>5. SEALING FLUID</b>         |                                 | <b>OG</b>                     |
| S31                             |              |            | <b>OF</b>                       | Food grade oil [-20°C to 140°C] |                               |
| <b>2. CHAMBER MATERIAL</b>      |              | <b>LF</b>  | <b>6. TRI-CLOVER CONNECTION</b> |                                 | <b>T15</b>                    |
| <b>LF</b>                       | AISI 316 SS  |            | <b>T01</b>                      | 1" Connection                   |                               |
| <b>LG</b>                       | AISI 316L SS |            | <b>T15</b>                      | 1.5" Connection                 |                               |
| <b>3. DIAPHRAGM MATERIAL</b>    |              | <b>DG</b>  | <b>T02</b>                      | 2" Connection                   |                               |
| <b>DG</b>                       | AISI 316L SS |            | <b>T25</b>                      | 2.5" Connection                 |                               |
| <b>4. INSTRUMENT CONNECTION</b> |              | <b>04N</b> | <b>T30</b>                      | 3" Connection                   |                               |
| <b>03B</b>                      | 3/8" BSP (F) |            | <b>7. ASSEMBLY</b>              |                                 | <b>B8</b>                     |
| <b>04N</b>                      | 1/2" NPT (F) |            | <b>B8</b>                       | Direct                          |                               |
| <b>02B</b>                      | 1/4" BSP (F) |            | <b>B9</b>                       | Remote                          |                               |
| <b>04B</b>                      | 1/2" BSP (F) |            | <b>8. OTHER OPTIONS</b>         |                                 | <b>XX</b>                     |
| <b>02N</b>                      | 1/4" NPT (F) | <b>XZ</b>  | Dry seal                        |                                 |                               |
|                                 |              | <b>HL</b>  | Helium leak test                |                                 |                               |
|                                 |              |            |                                 | <b>TC</b>                       | Material test certificate 3.1 |

**Ordering Example : D301-S31-LF-DG-04N-OG-T15-B8**

**NOTES :**

1. For Tri-clamps, Sealing rings & Bottom mating parts, please refer model A302.
2. All metal diaphragms are laser welded to the Top Chamber.