

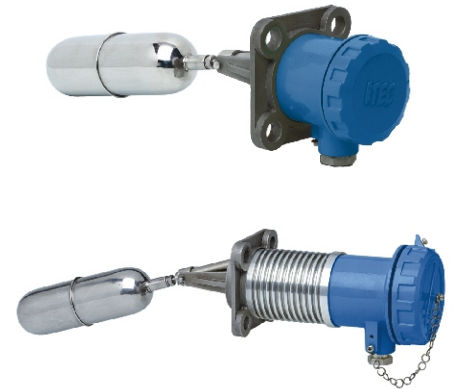
FEATURES

- Economical version
- Side or Top mounting
- Rigid & easy installation
- High temperature version
- Point level switching (HI/LO)
- Adjustable differential version

APPLICATION

- Power plants
- Chemicals process
- Water Treatment plant
- Hydro-Pneumatic Tanks

Side / Top Mounted

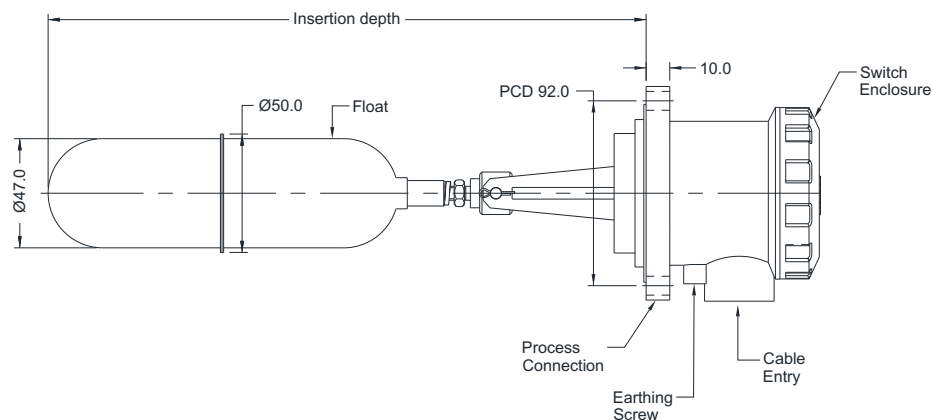


STANDARD SPECIFICATIONS

Enclosure	:	Pressure die-cast Aluminum
Process connection	:	Flanged / Threaded
Material of Wetted parts	:	AISI 316 SS
Switch Type	:	Micro switch (SPDT)
Switch Rating	:	5A / 250VAC
Switching Differential	:	Fixed 3 ~ 30mm (max) ±5mm (Standard) Adjustable between 40...300mm (Optional)
Mounting	:	Side (Standard) / Top (Optional)
Cable entry	:	½" BSP (F) single compression gland
Float Diameter	:	47 mm (50 mm at welded seam)
Ingress Protection	:	IP 65
Max. Operating Temperature	:	Up to 120°C (Standard) High Temperature model upto 350°C (Optional)
Max. Operating Pressure	:	20 bar
Min. Specific Gravity	:	0.6 depending up on float material and dimension
Insertion Depth	:	235 mm (Minimum)

DIMENSIONAL DRAWING

Standard Version



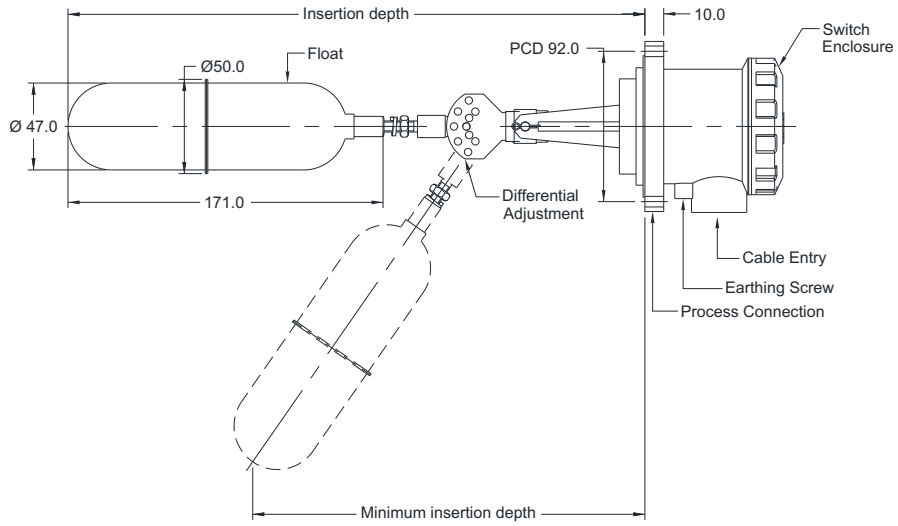
APPROVALS



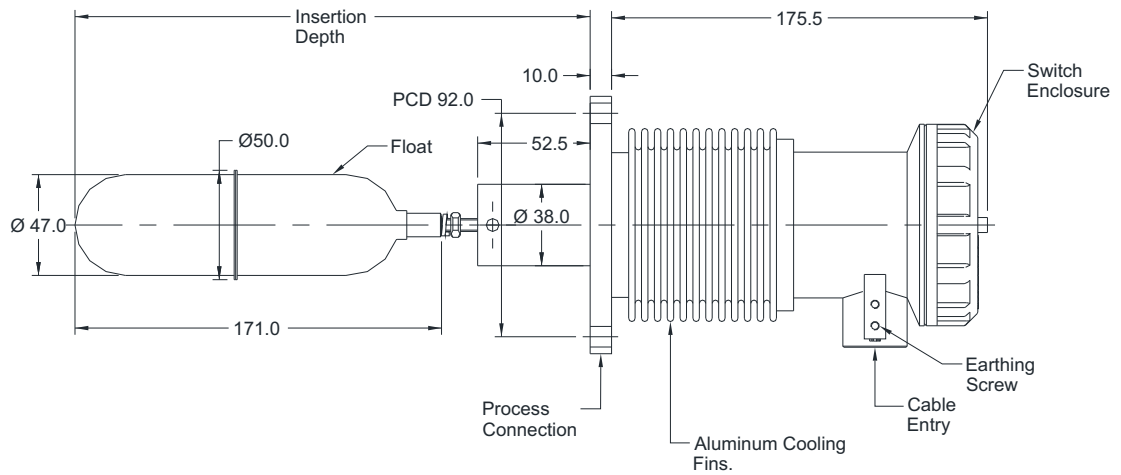
All dimensions are in mm.

DIMENSIONAL DRAWING

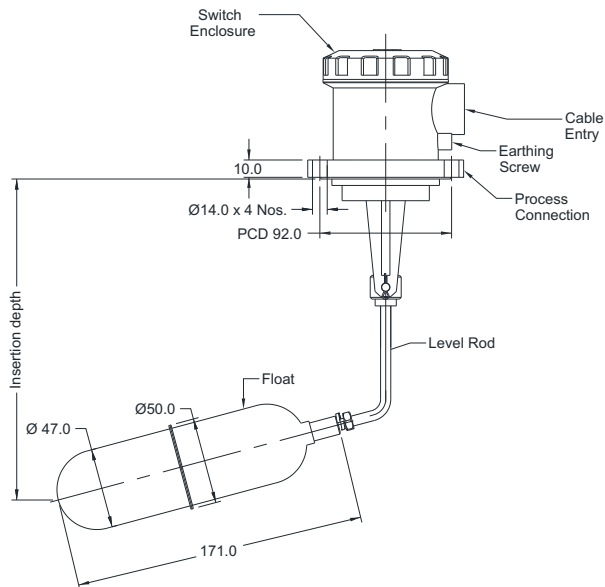
Adjustable Differential Level Switch



High Temperature (Up to 350°C)



Top Mounted Level Switch Special Application



All dimensions are in mm.

ORDERING CODES

1. BASIC MODEL

HG	General purpose version
HA	Adjustable differential version
HH	High temperature version
HP	Top mounting version

HG

2. INSERTION DEPTH

235	Min. 235 mm to 300 mm
305	Min. 305 mm to 375 mm

235

3. MICRO SWITCH TYPE

LM1	1 SPDT, 5A / 250VAC
LM2	2 SPDT, 5A / 250VAC

LM1

4. SWITCH ENCLOSURE

BP	Watherproof, IP 67
BQ	Flame proof, IP 67, Gr IIA, IIB
BR	Explosion proof, IP 67, Gr IIC
BU	Ex-Proof to CSA, FM, ATEX [EEx-d]

BP

5. WETTED PARTS / FLOAT

MC	AISI 316 SS (Standard)
MF	AISI 304 SS
M3	PVDF coated

MC

6. PROCESS CONNECTION

E02	92 mm PCD Square flange
E03	92 mm PCD Round flange
E04	92 mm PCD Sq. flange, forged
E01	61 mm PCD Round flange
16N	1" NPT (M) ²
18N	2" NPT (M) ²
16B	1" BSP (M) ²
16B	2" BSP (M) ²
A31	2" RF 150# as per ANSI B 16.5
A43	3" RF 150# as per ANSI B 16.5
A49	4" RF 150# as per ANSI B 16.5
A32	2" RF 300# as per ANSI B 16.5
A44	3" RF 300# as per ANSI B 16.5
A50	4" RF 300# as per ANSI B 16.5

E02

7. OTHER OPTIONS

XF	Tag plate, AISI 304 SS
TC	Material test certificate 3.1
TP	Performance test certificate
KE	Cable gland, double compression Weatherproof, Ni-plated brass
KG	Cable gland, double compression Weatherproof, AISI 304 SS
KK	Cable gland, double compression Flameproof, Ni-plated brass
KL	Cable gland, double compression Flameproof, AISI 304 SS

XF

Ordering Example : L101-HG-235-LM1-BP-MC-E02-XF

NOTES:

- For any special requirements like other insertion lengths, or special connections, please contact factory.
- Contact factory for further details.