

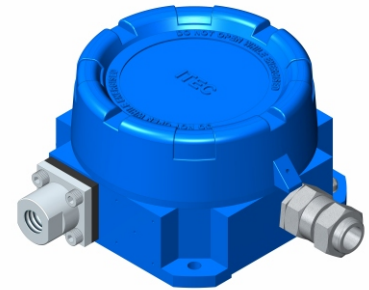
FEATURES

- Fix / adjustable differential
- Field adjustable set point
- Flameproof to Gas groups
- Internal set point lock
- Rigid construction
- Scale provided

APPLICATION

- Marine applications
- Textile machineries
- Power & steel plants
- Furnace applications
- Oil & Gas, Refineries
- Petrochemicals & Fertilizers
- Cement & Glass industries
- Railway engines & Turbines

High Accuracy & Repeatability Type



STANDARD SPECIFICATIONS

Repeatability	:	± 0.5 % F.S
Scale accuracy	:	± 1% F.S
Measurement unit	:	bar
Range	:	Refer "Range Table"
Range adjustment	:	External
Differential	:	Fixed (Standard), Adjustable (Optional)
Mounting	:	Bottom / Panel
Enclosure material	:	Aluminum pressure die cast
Equipment rating	:	Ex d IIC T6 Gb (-10°C ≤ Ta ≤ +60°C) Zone 0, 1 & 2 as per IS/IEC 60079-1 : 2007
Ingress protection	:	IP 67
Sensing elements	:	SS 316 Diaphragm
Switch	:	1 SPDT Snap action micro switch
Switch rating	:	15A,250 VAC / 0.2A,24 VDC (Standard)
Process connection	:	¼"BSP(F)
Maximum process temperature	:	150 °C
Ambient temperature	:	-10...60 °C
Cable entry	:	½" NPT Double compression, in brass
Set point	:	Between 20 to 80 % F.S for better performance
High voltage strength	:	0.5 to 0.6 KV between open contacts and 2 K V between contact and body

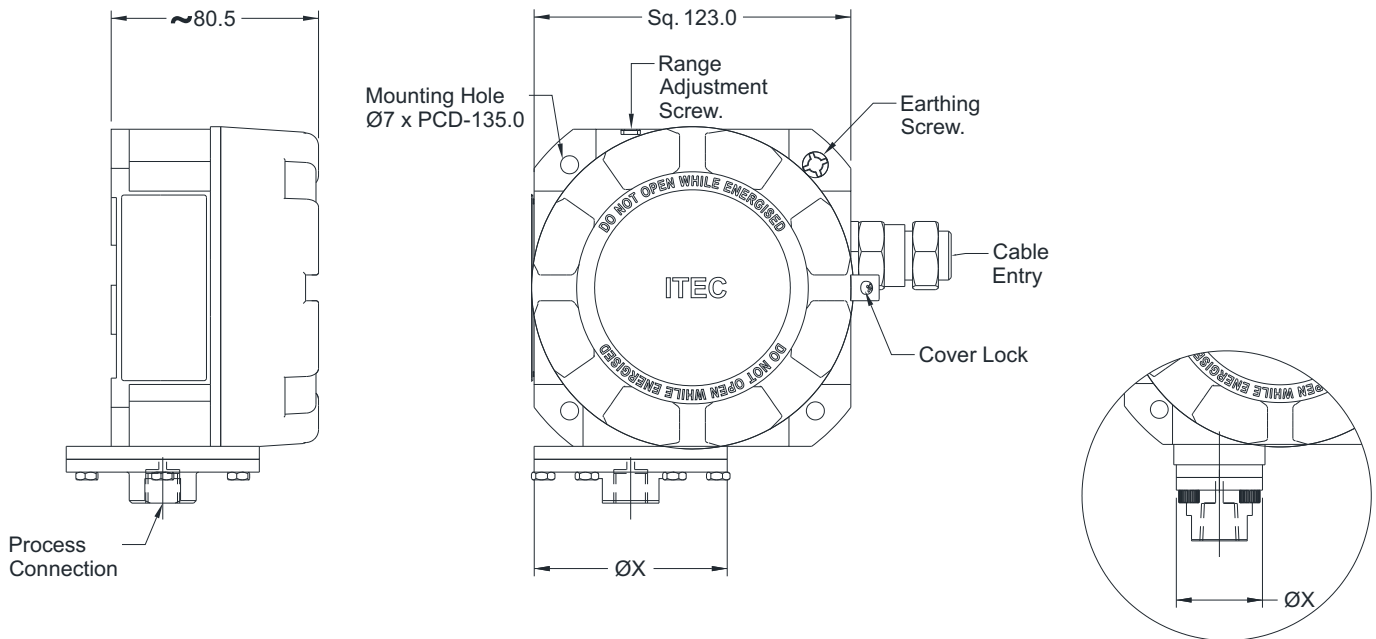
RANGE TABLE

CODE	RANGE "mbar"	CODE	RANGE "bar"
D53	-20...+20	B55	-1...0
D54	-40...+40	B40	-1...+2
D12	3...20	B42	-1...+4
D17	5...60	B04	0.2...2
D19	10...100	B06	0...4
D24	25...250	B07	0.6...6
D29	50...600	B09	1...10
		B11	1...16
		B13	2...25
		B15	2...32
		B16	4...40
		B17	5...60

APPROVALS



DIMENSIONAL DRAWING



All dimensions are in mm

Chamber Size	
Range	ØX
-10 mmWC to 100 mbar	165 mm
10 mbar to 400 mbar	75 mm
0.4 bar to 60 bar	45 mm

MICROSWITCH SPECIFICATION

DESCRIPTION	RATING	RATING	DIFFERENTIAL	TYPE	SWITCH CODE	
	AC	DC			1 No.	2 Nos.
Low deadband / differential	15A/250V, 2A/24V 0.2A/220V	15A/250V, 2A/24V 0.2A/220V	Fix	SPDT	M10	M20
High dead band / differential	15A/250V, 6A/24V 0.25A/220V	15A/250V, 5A/24V 0.03A/220V	Fix / Adjustable	SPDT	M11	M21
Gold plated switch	1A/250V	0.5A/28V	Fix	SPDT	M13	M23
Environmentally sealed silver contact	5A/28V	-	Fix	SPDT	M14	M24
Hermetically sealed silver contact	3A/28V	2A/24V	Fix	SPDT	M16	M26
Hermetically sealed gold contact	1A/125V	-	Fix	SPDT	M17	M27
High DC rating	10A/125V	6A/125V	Fix / Adjustable	SPDT	M18	M28
DPDT	10A/125V, 0.2A/250V	-	Fix / Adjustable	DPDT	M08	-

ORDERING CODES

1. RANGE

Refer "Range Table"

B09

2. CHAMBER MATERIAL

NF AISI 316 SS
 NN Monel K-500
 NO Hastelloy C-276

NF

3. SENSING ELEMENT MATERIAL

DF AISI 316 SS
 DN Monel K-500
 DO Hastelloy C-276
 D2 PTFE (Teflon)

DF

4. SWITCHING DIFFERENTIAL

S4 Fixed, 2...5%
 S5 Adjustable, 5...12.5%

S4

5. SET POINT

S8 On Raising
 S9 On Falling

S8

6. MICROSWITCH TYPE

Refer "Microswitch Specification"

M10

7. CABLE ENTRY

C0 3/4" ET (F)
 C1 1/2" NPT (F)

C1

8. PROCESS CONNECTION

02B 1/4" BSP (F) Standard
 12B 1/4" BSP (M)
 13B 3/8" BSP (M)
 14B 1/2" BSP (M)
 02N 1/4" NPT (F)
 12N 1/4" NPT (M)
 14N 1/2" NPT (M)
 04N 1/2" NPT (F)
 A25 1.5" RF 150#
 A26 1.5" RF 300#
 A27 1.5" RF 600#
 A31 2" RF 150#
 A32 2" RF 300#
 A33 2" RF 600#

02B

9. OTHER OPTIONS

TB Calibration Certificate
 XF AISI 304 SS tag plate
 XV Wall mounting bracket
 XS Mounting bracket with 2" U-clamp
 TC Material test certificate 3.1
 KK Cable gland, double compression
 flameproof, Ni-plated brass
 KL Cable gland, double compression
 flameproof, AISI 304 SS

KK

Ordering Example : S301-B09-NF-DF-S4-S8-M10-C1-02B-KK

COMPATIBLE ACCESSORIES

Diaphragm seal	Gauge cock	Needle Valves
Cooling tower	Snubber	Manifolds
Siphon		

NOTES:

1. Except "Standard" connection, other connections are given through adaptors.
2. The option "TC" covers only wetted parts.
3. Cable gland is available in other materials, contact factory.
4. Double Compression cable gland is a necessary option. Must to be chosen while ordering.