

FEATURES

- Weld-Pad connection
- Mineral insulated
- Transmitter mountable
- Exchangeable insert
- Spring loaded design

APPLICATION

- Refineries
- Oil & gas application
- Surface temperature of refractory lined vessels
- Petrochemicals Plant
- Skin Temperature of Heater Tube

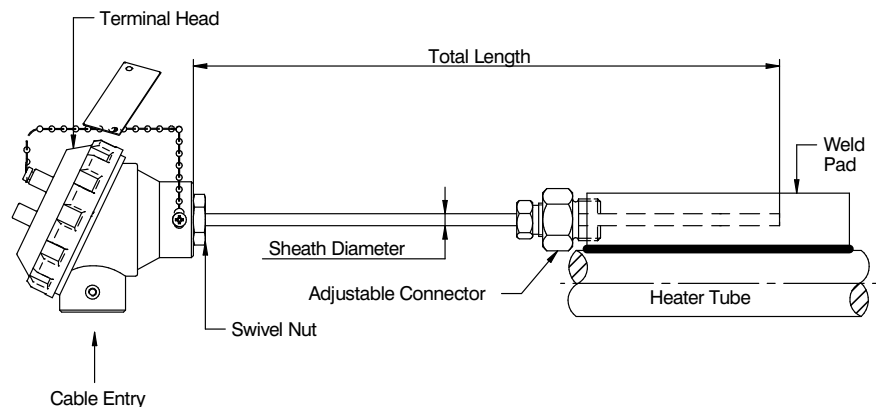
Weldpad Mounting



STANDARD SPECIFICATIONS

Element	:	Type K (NiCr-Ni)
Accuracy	:	Standard to ISA & ANSI MC96.1
No. of sensors	:	Simplex
Hot junction	:	Ungrounded
Sheath material	:	AISI 316 SS
Sheath diameter	:	6.0 mm
Terminal head type	:	Threaded, weatherproof, IP-65
Terminal head material	:	Die-cast Aluminum
Cable entry	:	3/4" ET (F), 1 No.
Mounting Type	:	Bracket Mounting for Head
Weld Pad Size	:	25 mm X 25 mm X 50 mm
Weld Pad Material	:	AISI 316 SS
Total Length	:	3000 mm

DIMENSIONAL DRAWING



REFERENCE

IEC-584.2 / ANSI MC-96.1

ORDERING CODES

1. ELEMENT

K	Type K (NiCr-Ni)
J	Type J (Fe-CuNi)
N	Type N (NiCrSi-NiSi)
E	Type E (NiCr-CuNi)
T	Type T (Cu-CuNi)
R	Type R (Pt-13%Rh/Pt)
S	Type S (Pt-10%Rh/Pt)
B	Type B (Pt/30%Rh-Pt/6%Rh)

2. ACCURACY

P	Standard	Q	Special
----------	----------	----------	---------

3. NO. OF SENSORS

V	Simplex	W	Duplex
X	Triplex		

4. HOT JUNCTION

G	Grounded	U	Ungrounded
----------	----------	----------	------------

5. SHEATH MATERIAL

MF	AISI 316 SS	MG	AISI 316L SS
ME	AISI 310 SS	MQ	Inconel 600

6. SHEATH DIAMETER

M30	3.0 mm	M50	5.0 mm
M60	6.0 mm	M80	8.0 mm

7. HEAD ENCLASURE

BZ	WP, IP 65, threaded cover
BX	WP, IP 67, threaded cover
BS	Flame proof, IP 67, Gr IIA, IIB
BT	Explosion proof, IP 67, Gr IIC
BV	WP, IP 65, Hinged type
BY	WP, IP 65, cover fitted with 2 screws
BU	Ex-Proof to CSA, FM, ATEX [EEx-d]

8. ENCLOSURE MATERIAL

ML	Die-cast aluminum		
MC	AISI 304 SS	MF	AISI 316 SS

9. CABLE ENTRY

C0	3/4" ET (F), 1 No.
C1	1/2" NPT (F), 1 No.
C2	M20 x 1.5mm (F), 1 No.
C3	3/4" NPT (F), 1 No.
C5	3/4" ET (F), 2 Nos.
C6	1/2" NPT (F), 2 Nos.
C8	M20 x 1.5mm (F), 2 Nos.
C9	3/4" NPT (F), 2 Nos.

10. MOUNTING TYPE

B0	Local mounting, no bracket
B1	Bracket mounting, for head
B2	2" Pipe mounting bracket
B3	Surface mounting, for JB

11. WELD PAD / INTEGRAL COLLAR SIZE

W0	Rectangle, 100 x 25 x 25 mm
W1	Rectangle, 100 x 50 x 50 mm
W2	Rectangle, 50 x 25 x 25 mm
W4	Integral collar, 30 x 19 x 10 mm
W5	Integral collar, 40 x 19 x 10 mm
W6	Integral collar, 50 x 19 x 10 mm

12. WELDPAD MATERIAL

MF	AISI 316 SS
ME	AISI 310 SS
M6	AISI 446 SS
MQ	Inconel 600

13. TOTAL LENGTH (TL)

XXXXX	50 mm up to 25,000 mm
--------------	-----------------------

14. OTHER OPTIONS

TB	Calibration Certificate
XF	Tag plate, AISI 304 SS
KD	SC, cable gland, Ni-brass WP
KE	DC, cable gland, Ni-brass WP
KJ	SC, cable gland, Ni-brass FP
KK	DC, cable gland, Ni-brass FP
KF	SC, cable gland, AISI 304 SS WP
KG	DC, cable gland, AISI 304 SS WP
KL	SC, cable gland, AISI 304 SS FP
KM	DC, cable gland, AISI 304 SS FP
KH	SC, cable gland, AISI 316 SS WP
KI	DC, cable gland, AISI 316 SS WP
KN	SC, cable gland, AISI 316 SS FP
KO	DC, cable gland, AISI 316 SS FP
KB	Plug fitting for CE, AISI 304 SS
KC	Plug fitting for CE, AISI 316 SS
KU	Plug fitting for CE, Aluminum
KS	SS base plate for transmitter
KT	Head mount transmitter

Ordering Example : T301-K-P-V-U-MF-M60-BZ-ML-C0-B1-W2-MF

NOTES:

- Other sheath diameters, connections are available, please contact factory for details.
- WP = Weatherproof, FP = Flame proof, SC = Single Compression, DC = Double Compression, CE = Cable Entry
- Transmitter output shall be 4...20 mA as standard, any other output required, please contact factory for details.